



## Foxglove Close

Melksham SN12 6FS

- Vendor Suited
- Driveway Parking for Two Vehicles
- Enclosed Garden with Side Access
- Nature Reserve and Park Nearby
- Three Bedroom Semi-Detached
- Kitchen/Diner
- Close to Outstanding Rated Infant and Primary School
- Popular Street

**£280,000**







### **Hall**

External door to front, radiator and doors to living room and WC.

### **WC**

Fitted with two piece suite comprising wash hand basin and WC, radiator and window to front elevation.

### **Living Room**

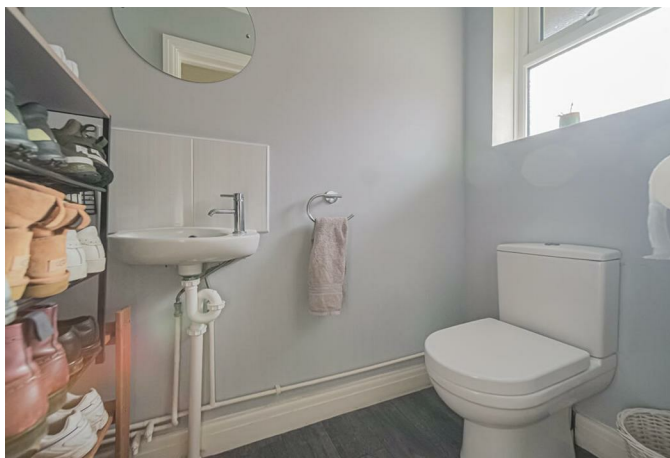
11'7" x 14'10"

Window to front elevation, radiator and door to kitchen/diner.

### **Kitchen/Diner**

13'1" x 14'10"

Fitted with a matching range of base and eye level units with worktop space over, 1+1/2 bowl stainless steel sink, integrated dishwasher and washing machine, space for fridge/freezer, window to rear elevation, stairs to first floor with under stairs storage, two radiators and patio doors to garden.



## Landing

Doors to bedrooms and bathroom.

## Bedroom One

15'7" x 8'9"

Window to front elevation, over stairs storage, fitted wardrobe and radiator.

## Bedroom Two

9'11" x 8'3"

Window to rear elevation, fitted wardrobe and radiator.

## Bedroom Three

8'7" x 5'10"

Window to front elevation and radiator.

## Bathroom

Fitted with a three piece suite comprising bath with shower over and glass screen, wash hand basin and C with window to rear elevation and radiator.

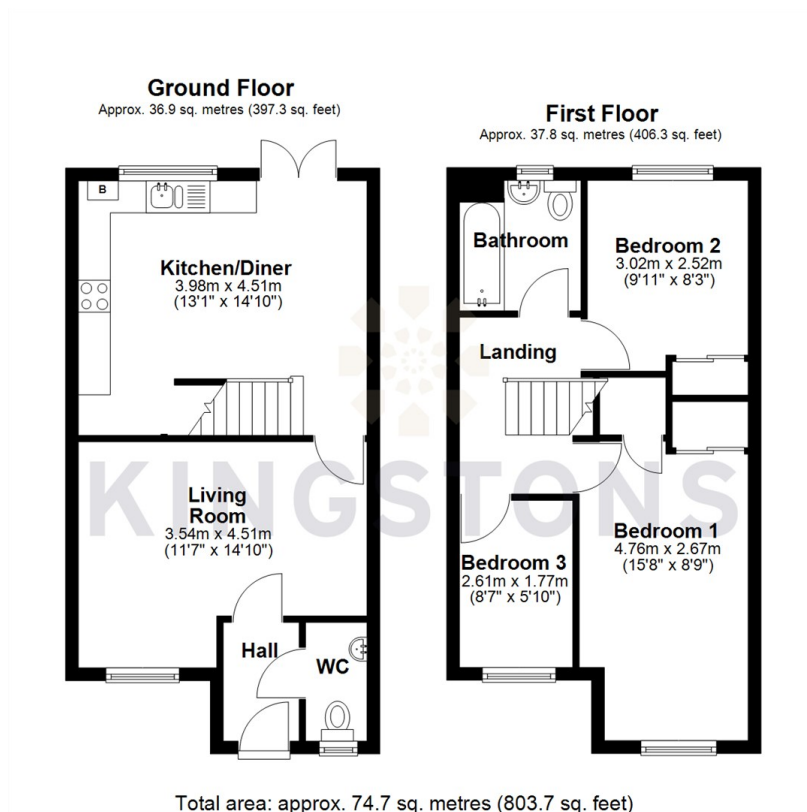
## Outside

Driveway parking beside the house for approximately two vehicles and enclosed rear garden with side access.





Local Authority **Wiltshire**  
Council Tax Band **C**  
EPC Rating



**KINGSTONS**  
**Melksham Office**

11 High Street, Melksham,  
Wiltshire, SN12 6JR

**Contact**

01225709115  
sales@kingstons.biz  
www.kingstons.biz

Agents Note: Whilst every care has been taken to prepare these particulars, they are for guidance purposes only. All measurements are approximate and for general guidance purposes only and whilst every care has been taken to ensure accuracy, they should not be relied upon and potential buyers/tenants are advised to recheck the measurements.